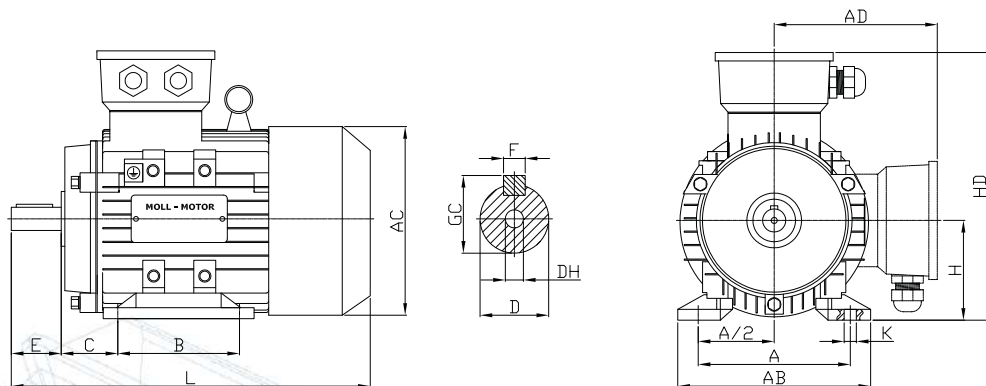


2.2 Abmessungen

2.2 Dimensions

B3



www.elektro-motory.cz

| Baugröße frame size | Pole poles | A | A/2 | B | C | D | E | F | G | H | K | AB | AC | AD | HD | L | DH* |
|------------------------|---------------|-----|-------|-----|-----|----|-----|----|------|-----|-----|-----|-----|-----|-----|-----|--------|
| 56M | 2 / 4 | 90 | 45 | 71 | 36 | 9 | 20 | 3 | 7,2 | 56 | 5,8 | 115 | 110 | 100 | 156 | 199 | M4x12 |
| 63M | 2 / 4 | 100 | 50 | 80 | 40 | 11 | 23 | 4 | 8,5 | 63 | 7,0 | 135 | 130 | 115 | 180 | 230 | M4x12 |
| 71M | 2 / 4 / 6 | 112 | 56 | 90 | 45 | 14 | 30 | 5 | 11,0 | 71 | 7,0 | 150 | 145 | 127 | 195 | 255 | M5x12 |
| 80M | 2 / 4 / 6 / 8 | 125 | 62,5 | 100 | 50 | 19 | 40 | 6 | 15,5 | 80 | 10 | 165 | 158 | 140 | 220 | 300 | M6x16 |
| 90S | 2 / 4 / 6 / 8 | 140 | 70 | 100 | 56 | 24 | 50 | 8 | 20,0 | 90 | 10 | 180 | 177 | 160 | 255 | 330 | M8x19 |
| 90L | 2 / 4 / 6 / 8 | 140 | 70 | 125 | 56 | 24 | 50 | 8 | 20,0 | 90 | 10 | 180 | 177 | 160 | 255 | 360 | M8x19 |
| 100L | 2 / 4 / 6 / 8 | 160 | 80 | 140 | 63 | 28 | 60 | 8 | 24,0 | 100 | 12 | 205 | 198 | 172 | 270 | 400 | M10x22 |
| 112M | 2 / 4 / 6 / 8 | 190 | 95 | 140 | 70 | 28 | 60 | 8 | 24,0 | 112 | 12 | 230 | 220 | 190 | 300 | 435 | M10x22 |
| 132S | 2 / 4 / 6 / 8 | 216 | 108 | 140 | 89 | 38 | 80 | 10 | 33,0 | 132 | 12 | 270 | 259 | 210 | 345 | 470 | M12x28 |
| 132M | 2 / 4 / 6 / 8 | 216 | 108 | 178 | 89 | 38 | 80 | 10 | 33,0 | 132 | 12 | 270 | 259 | 210 | 345 | 510 | M12x28 |
| 160M | 2 / 4 / 6 / 8 | 254 | 127 | 210 | 108 | 42 | 110 | 12 | 37,0 | 160 | 15 | 320 | 315 | 255 | 420 | 615 | M16x36 |
| 160L | 2 / 4 / 6 / 8 | 254 | 127 | 254 | 108 | 42 | 110 | 12 | 37,0 | 160 | 15 | 320 | 315 | 255 | 420 | 660 | M16x36 |
| 180M | 2 / 4 / 6 / 8 | 279 | 139,5 | 241 | 121 | 48 | 110 | 14 | 42,5 | 180 | 15 | 355 | 355 | 280 | 455 | 700 | M16x36 |