

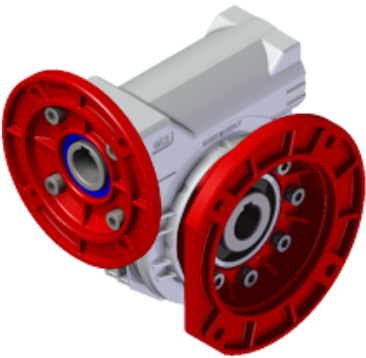
P045FC04S0-QB3-

Price

Lead time

Configuration

Type:	P
Size:	045
Input:	71 B14 ø105
Output shaft/bore:	Special series ø19 ø19
Mounting:	FC
Mounting position:	B3
Input bore:	Standard
Coupling:	-



Technical data

Input rpm (n_1):	1400 min⁻¹
Output rpm (n_2):	66.67 min⁻¹
Ratio (i):	21.00
Nominal power (P_{1R}):	0.43 kW
Nominal torque (M_{2R}):	41 Nm
Dynamic efficiency (RD):	67%

Selection

Motor power (P_{1M}):	0.25 kW
Output torque (M_{2M}):	24 Nm
Service factor (f.s.):	1.7

Lubrication

Oil quantity:	0.09l
AGIP:	Telium VSF 320
SHELL:	Omala S4 WE 320

Direction of rotation

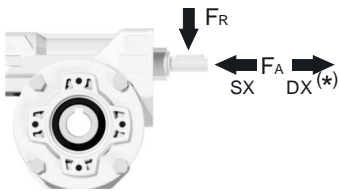


On our website

Features	Reversibility
How to order	Thermal limit
Dimension	Atex certification
Accessories/options	Installation check list
Electric motors	Spare parts list
Selection guide - fs	Complete catalogue
Mounting pos. - lubricant	Selection by power (xls)
Calc. the overhung load	

Axial and radial loads

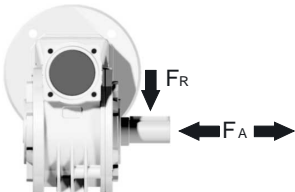
Input shaft



n_2 (min ⁻¹)	FA (N)	FR (N)
1400	42	210

*Strong axial loads in the DX direction are not allowed

Output shaft



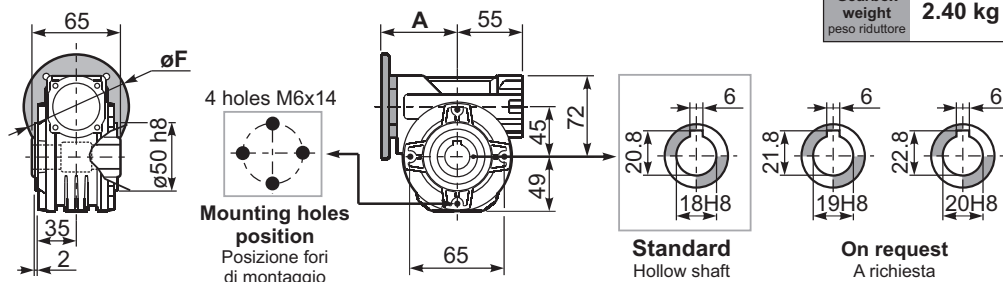
n_2 (min ⁻¹)	FA (N)	FR (N)
200	180	900
150	200	1000
100	220	1100
75	240	1200
50	260	1400
25	300	1800
15	400	2000

Note

3D dimensions on the Web

P045**FB**... Basic wormbox
Riduttore base

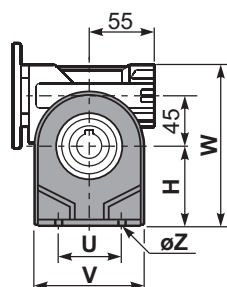
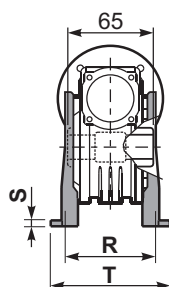
M. flanges	Kit code	øF	A
63B5	K050.4.041	138	74
71B5	K050.4.042	160	71.5
56B14	KC40.4.049	80	71.5
63B14	K050.4.047	90	74
71B14	K050.4.045	105	71.5



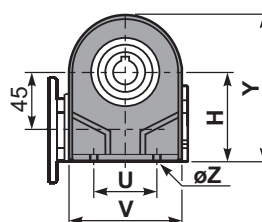
Gearbox weight
peso riduttore **2.40 kg**

1

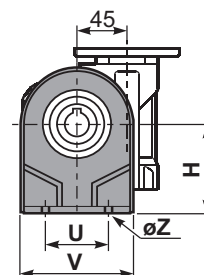
P045**PA**... Feet
Piedini



P045**PB**... Feet
Piedini

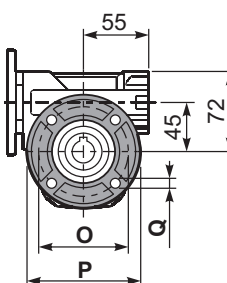
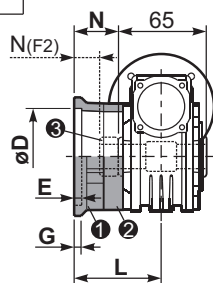


P045**PV**... Feet
Piedini



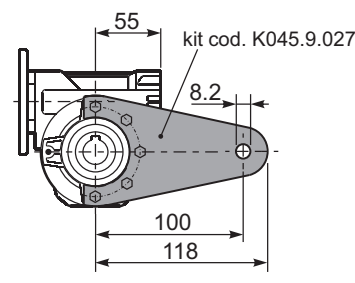
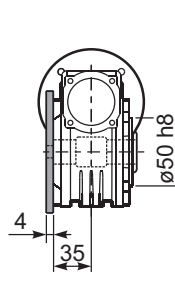
	H	R	S	T	U	V	Y	W	øZ	kit code
type B	72	81	3	100	52	98	121	144	ø10.5	K045.9.022
type S	71	84	8	100	70	90	120	143	ø8	KS045.9.023

P045**FC**... Output flange
Flangia uscita



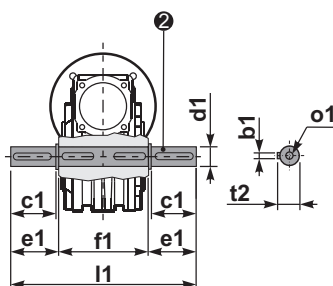
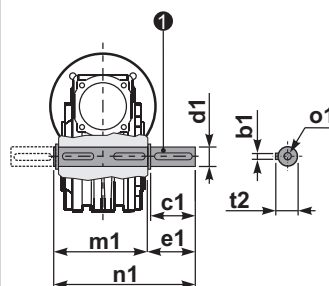
type B	øD	E	G	L	N	O	P	Q	kit code
FC	60 ^{+0.15} _{+0.05}	9	9	60.5	28	87	110	8.5	1 K045.9.010 2 -
FL	60 ^{+0.15} _{+0.05}	9	9	90.5	58	87	110	8.5	1 K045.9.010 2 K045.0.200
type S	øD	E	G	L	N	O	P	Q	kit code
F1	95 ^{+0.20} _{+0.15}	4	11	73.5	41	115	140	9	1 KS045.9.013 2 -
F2	60 ^{+0.15} _{+0.05}	9	9	60.5	19	87	110	8.5	1 KS045.9.010 2 S045.0.204
F3	80 ^{+0.15} _{+0.10}	3	8	51.5	19	100	120	9	1 KS045.9.014 2 -

P045**BR**... Reaction arm
Braccio di reazione



P045.....**S**... Single Shaft
Albero lento semplice

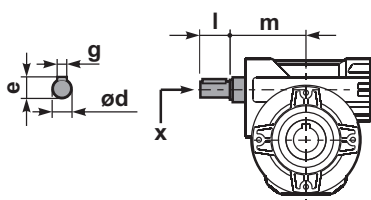
P045.....**D**... Double Shaft
Albero lento bisp.



1 kit cod. K045.5.028 type B
kit cod. KS045.5.030 type S

2 kit cod. K045.5.029 type B
kit cod. KS045.5.031 type S

R045**FB**... Input shaft
Albero in entrata



	ød	e	g	l	m	x	kit code
type B	11 h6	12.5	4	30	68	-	1 K045.5.006 PAM71 2 -
type S	-	-	-	-	-	-	1 - 2 -

	b1	c1	d1	e1	f1	l1	m1	n1	t2	o1
type B	6	32	18 ^{-0.005} _{-0.020}	43	65	151	70	113	20.5	M6x18
type S	6	40	19 ^{-0.005} _{-0.020}	58.8	65	182	70	128.5	21.5	M8x20