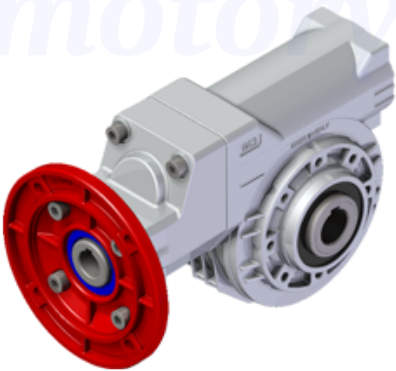


Price

Lead time

Configuration

Type:	P
Size:	P45
Input:	63 B14 ø90
Output shaft/bore:	Standard ø18
Mounting:	FB
Mounting position:	B3
Input bore:	Standard



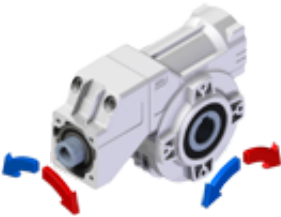
Technical data

Input rpm ( $n_1$ ):	1400 min <sup>-1</sup>
Output rpm ( $n_2$ ):	3.19 min <sup>-1</sup>
Ratio (i):	438.60
Nominal power ( $P_{1R}$ ):	0.04 kW
Nominal torque ( $M_{2R}$ ):	39 Nm
Dynamic efficiency (RD):	36%

Selection

Motor power ( $P_{1M}$ ):	0.12 kW
Output torque ( $M_{2M}$ ):	39 Nm
Service factor (f.s.):	*

Direction of rotation



Lubrication

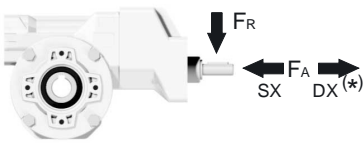
Oil quantity:	0.17l
AGIP:	Telium VSF 320
SHELL:	Omala S4 WE 320

On our website

<a href="#">Features</a>	<a href="#">Reversibility</a>
<a href="#">How to order</a>	<a href="#">Thermal limit</a>
<a href="#">Dimension</a>	<a href="#">Atex certification</a>
<a href="#">Accessories/options</a>	<a href="#">Installation check list</a>
<a href="#">Electric motors</a>	<a href="#">Spare parts list</a>
<a href="#">Selection guide - fs</a>	<a href="#">Complete catalogue</a>
<a href="#">Mounting pos. - lubricant</a>	<a href="#">Selection by power (xls)</a>
<a href="#">Calc. the overhung load</a>	

Axial and radial loads

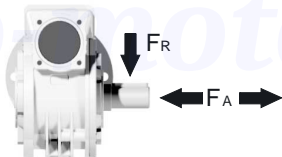
Input shaft



$n_2$ (min <sup>-1</sup> )	FA (N)	FR (N)
1400	44	220

\*Strong axial loads in the DX direction are not allowed

Output shaft



$n_2$ (min <sup>-1</sup> )	FA (N)	FR (N)
75	240	1200
50	260	1400
25	300	1800
15	400	2000

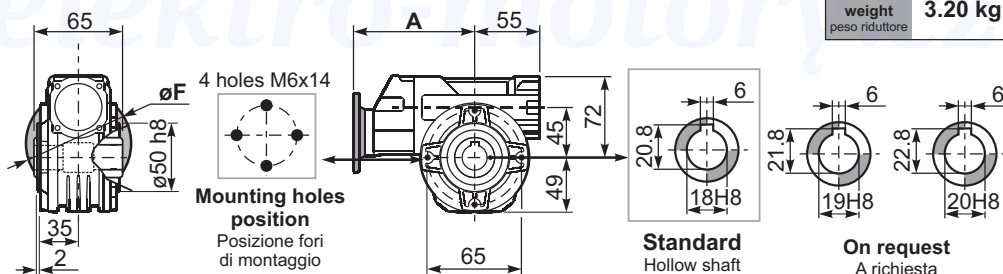
Note

3D dimensions on the Web

**PP45FB...** Basic wormbox  
Riduttore base

Gearbox weight  
peso riduttore **3.20 kg**

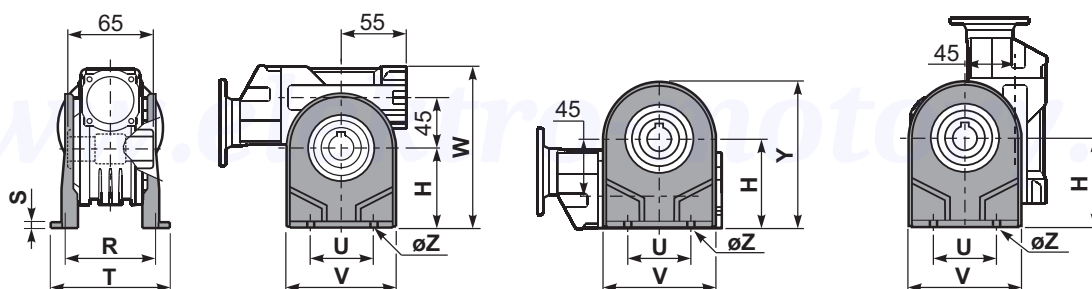
M. flanges	Kit code	øF	A
<b>56B5</b>	K050.4.046	120	137.5
<b>63B5</b>	K050.4.041	138	139.5
<b>71B5</b>	K050.4.042	160	137
<b>63B14</b>	K050.4.047	90	139.5
<b>71B14</b>	K050.4.045	105	137



**PP45PA...** Feet  
Piedini

**PP45PB...** Feet  
Piedini

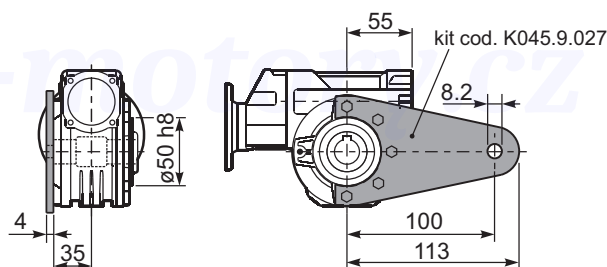
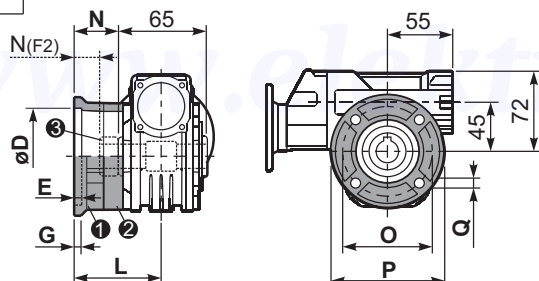
**PP45PV...** Feet  
Piedini



	H	R	S	T	U	V	Y	W	øZ	kit code
type B	72	81	3	100	52	98	121	144	ø10.5	K045.9.022
type S	71	84	8	100	70	90	120	143	ø8	KS045.9.023

**PP45FC...** Output flange  
Flangia uscita

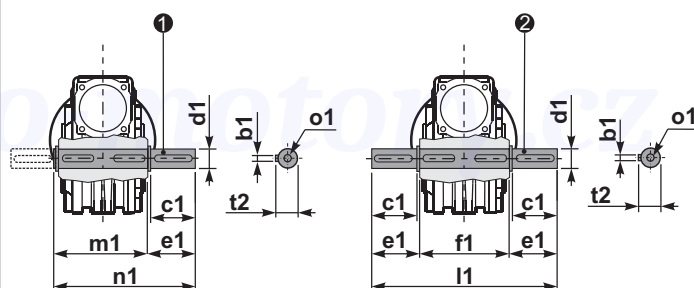
**PP45BR...** Reaction arm  
Braccio di reazione



type B	øD	E	G	L	N	O	P	Q	kit code
<b>FC</b>	60 <sup>+0.15</sup> <sub>+0.05</sub>	9	9	60.5	28	87	110	8.5	① K045.9.010 ② -
<b>FL</b>	60 <sup>+0.15</sup> <sub>+0.05</sub>	9	9	90.5	58	87	110	8.5	① K045.9.010 ② K045.0.200
type S	øD	E	G	L	N	O	P	Q	kit code
<b>F1</b>	95 <sup>+0.20</sup> <sub>+0.15</sub>	4	11	73.5	41	115	140	9	① KS045.9.013 ② -
<b>F2</b>	60 <sup>+0.15</sup> <sub>+0.05</sub>	9	9	60.5	19	87	110	8.5	① KS045.9.010 ② S045.0.204
<b>F3</b>	80 <sup>+0.03</sup> <sub>+0.00</sub>	3	8	51.5	19	100	120	9	① KS045.9.014 ② -

**PP45.....S...** Single Shaft  
Albero lento semplice

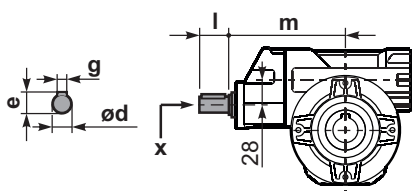
**PP45.....D...** Double Shaft  
Albero lento bisp.



① kit cod. K045.5.028 type B  
kit cod. KS045.5.030 type S

② kit cod. K045.5.029 type B  
kit cod. KS045.5.031 type S

**RP45FB...** Input shaft  
Albero in entrata



	ød	e	g	l	m	x
type B	14 h6	16	5	25	131	M5x13
type S	-	-	-	-	-	-

	b1	c1	d1	e1	f1	l1	m1	n1	t2	o1
type B	6	32	18 <sup>-0.005</sup> <sub>-0.020</sub>	43	65	151	70	113	20.5	M6x18
type S	6	40	19 <sup>-0.005</sup> <sub>-0.020</sub>	58.8	65	182	70	128.5	21.5	M8x20