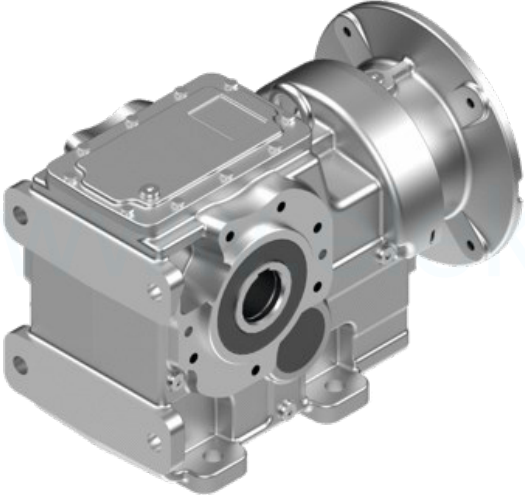
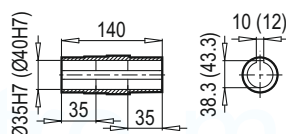
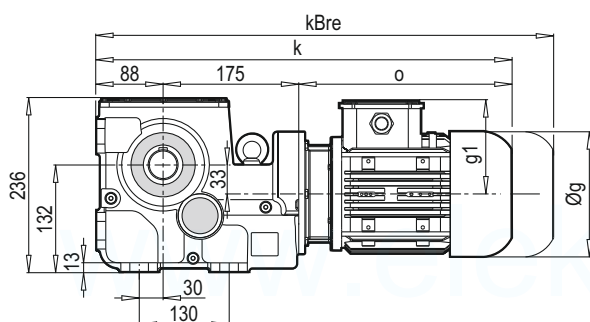
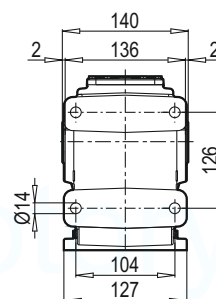


Helical Bevel Gear Units K Series			
Technic Selection		Variation	
Type	K	Input Connection Type	PAM
Input Option	Without Motor	Input Backstop Status	Without Backstop
Assembly Shaft Design	DA/B14 (HOLLOW-SHAFT)	Mounting Position	M1
Body Size	35390	Input Connection Size	PAM-100-B5
Frequency [Hz]	50	Output Shaft Diameter	ØD=Ø35H7[mm]
fs	3.3	Option	
iges	12.41	Oil Status	Exist
M2 [Nm]	175	Oil Type	Mineral ISO VG 220
M2max [Nm]	580	Vent Plug	Standard
Motor Efficiency	IE2	Oil Indicator Plug	None
Motor Size	100/4P	Product Label	Standard
n1 [rpm]	1400	Color	RAL 7000
n2 [rpm]	112.8	Montage Position Status	Standard
P1 [kW]	2.2	Case Material	GGG-40
P1max [kW]	7.29	Reinforced Bearing Status	None
		Output Oil Seal Type	NBR
		Output Bearing Quality	Standard

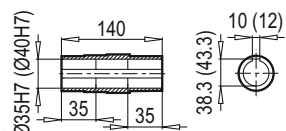
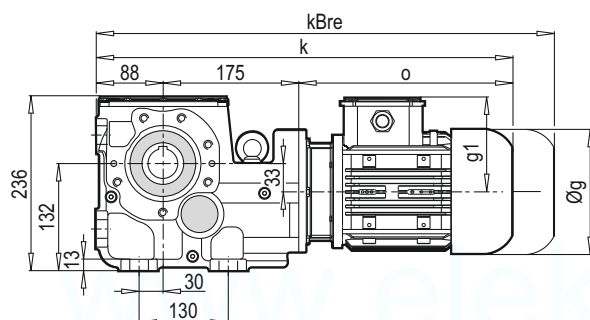
K 35390



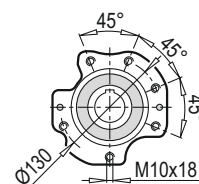
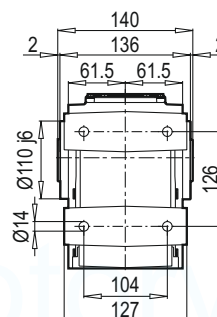
DA



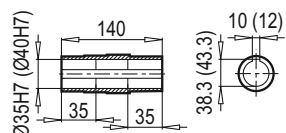
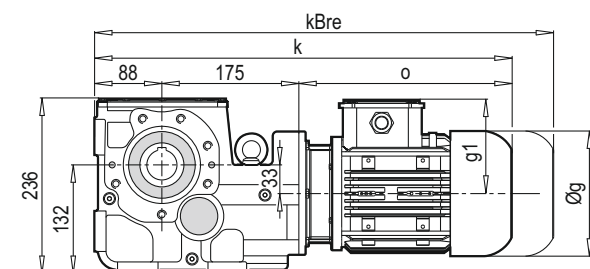
K 35390



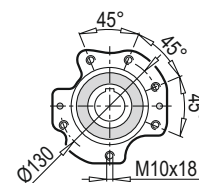
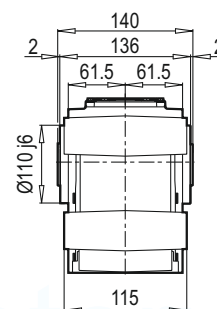
DA / B14



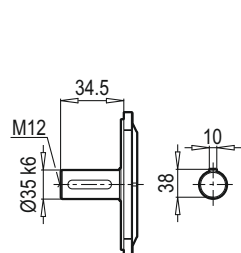
K 35390



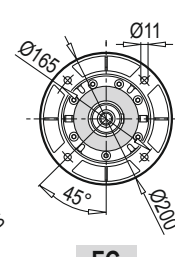
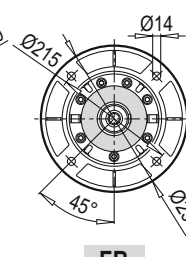
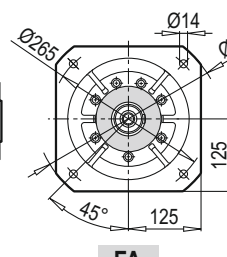
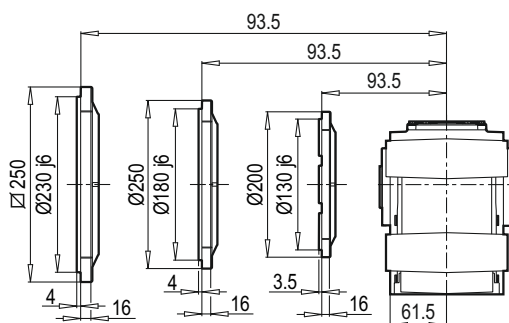
DG / B14



TMG / B5



DG / B5



FA

FB

FC

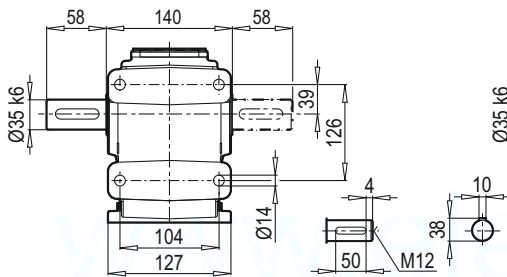
FA

FB

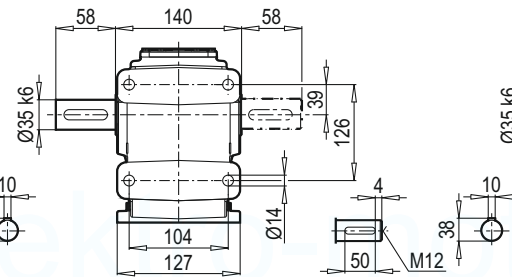
FC

	63M	71M	80M	90S	90L	100L	112M		
g	124	140	159	193	193	217	232		
g1	111	119	127	151	151	160	168		
k	475	504	530	576	596	597	647		
kBre	527	564	592	649	669	678	727		
o	212	241	267	313	333	334	384		

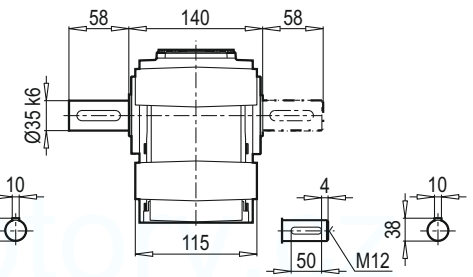
TMA / ÇMA



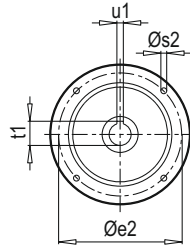
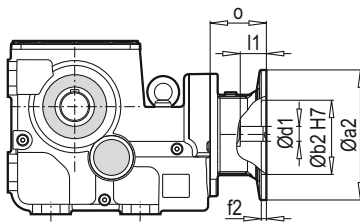
TMA / ÇMA / B14



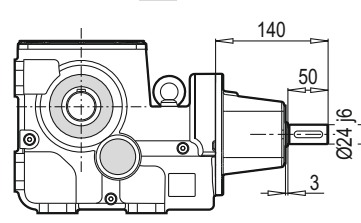
TMG / ÇMG / B14



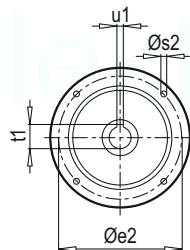
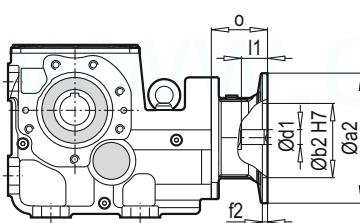
K 35390 PAM B5/B14



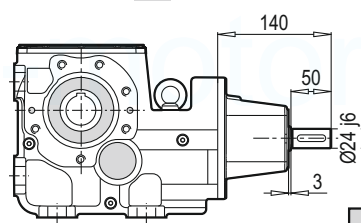
K 35390 W



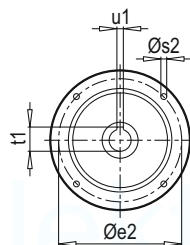
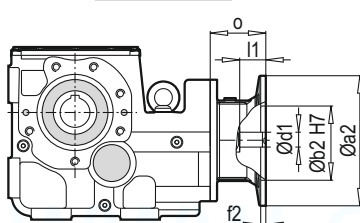
K 35390 PAM B5/B14



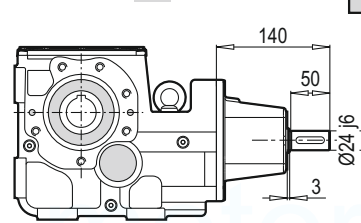
K 35390 W



K 35390 PAM B5/B14



K 35390 W



W ~ Kg	
K 35390	24

Typ / Type / Tipo Type / Tipo	PAM B5	Øa2	Øb2	Øe2	f2	Øs2	Ød1	l1	t1	u1	o
K 35390	63	140	95	115	4.5	8	11	25	12.8	4	57
	71	160	110	130	5	8	14	32	16.3	5	69
	80	200	130	165	5	10	19	42	21.8	6	90
	90	200	130	165	5	10	24	52	27.3	8	90
	100	250	180	215	5.5	12	28	62	31.3	8	105
	112	250	180	215	5.5	12	28	62	31.3	8	105

~ Kg	
PAM B5	K 35390
63	21
71	22
80	23
90	23
100	27
112	27

Typ / Type / Tipo Type / Tipo	PAM B14	Øa2	Øb2	Øe2	f2	Øs2	Ød1	l1	t1	u1	o
K 35390	63	90	60	75	2.5	6	11	25	12.8	4	57
	71	105	70	85	2.5	7	14	32	16.3	5	69
	80	120	80	100	3	7	19	42	21.8	6	90
	90	140	95	115	3	9	24	52	27.3	8	90
	100	160	110	130	3.5	9	28	62	31.3	8	105
	112	160	110	130	3.5	9	28	62	31.3	8	105

~ Kg	
PAM B14	K 35390
63	20
71	21
80	22
90	22
100	24
112	24